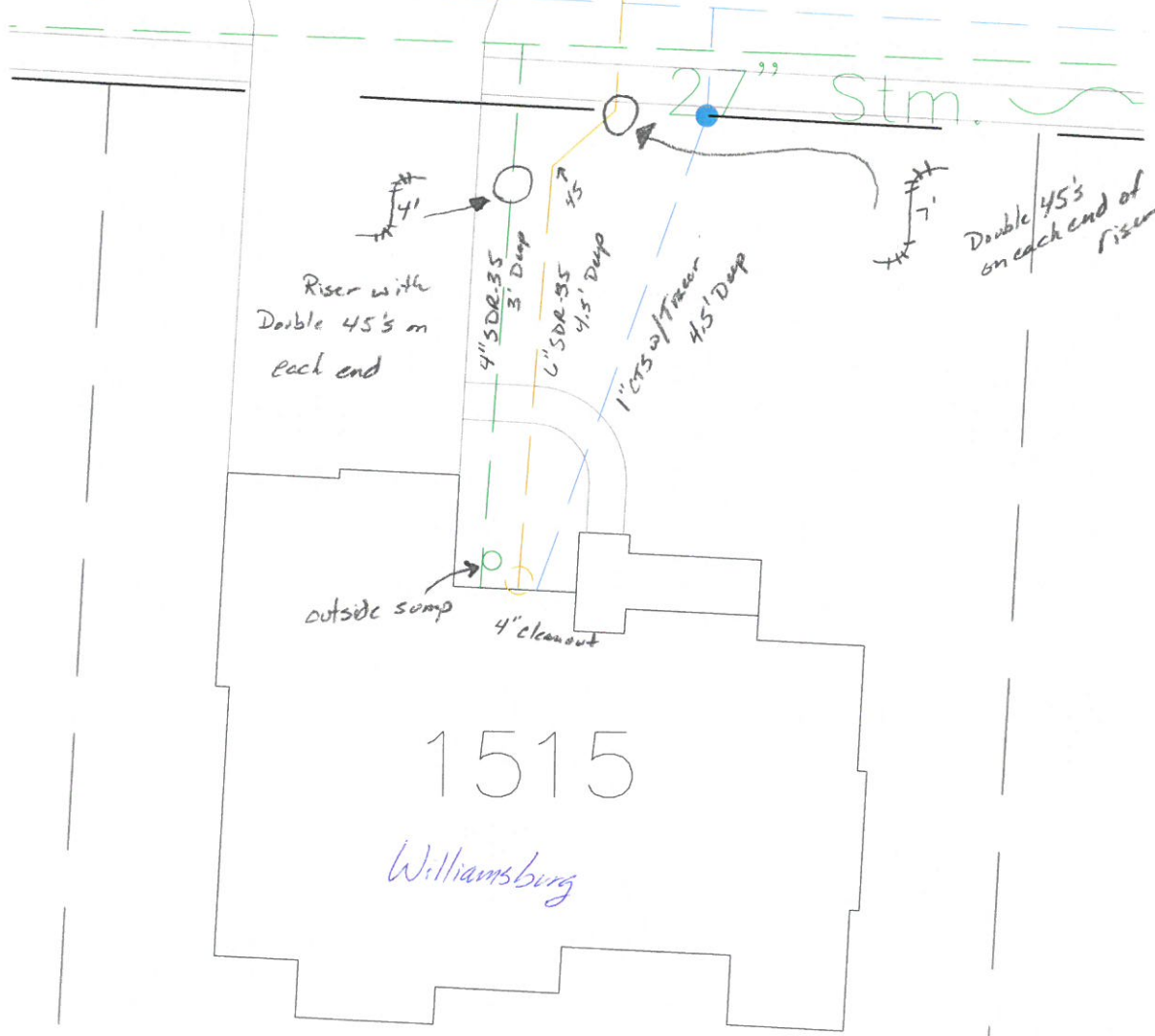


1" = 20'
Mark Wells / Patches Exc.
5-7-20 / 5-8-20
Insp. By: A. DeL

3"
W.M.



Riser with
Double 45's on
each end

4\" SDR-35
3' Deep

45
4\" SDR-35
4.5' Deep

45
1\" CR32 riser
4.5' Deep

Double 45's
on each end of
riser

outside sump

4\" cleanout

1515

Williamsburg